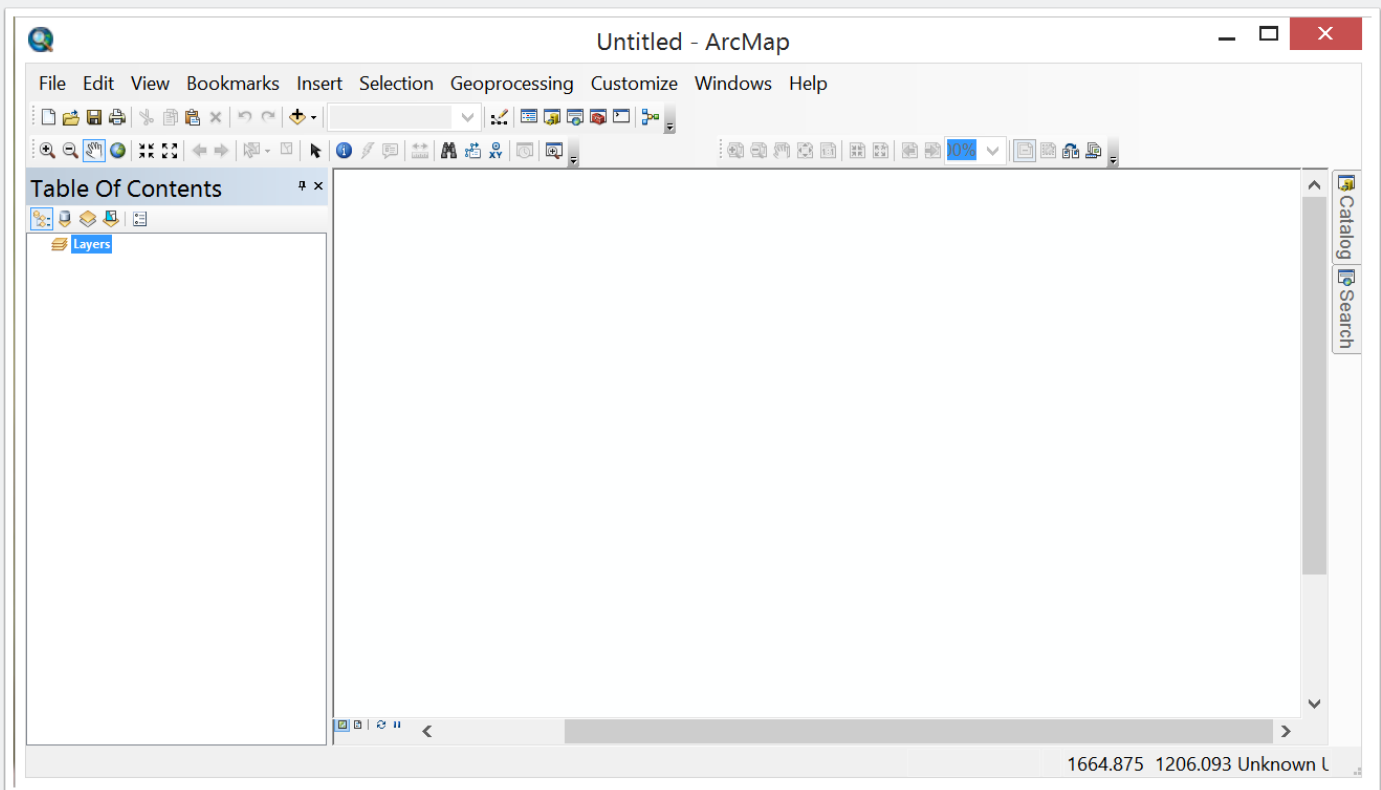


PISCES: building a mxd with tools

Open a blank ArcMap document

This tutorial will cover the steps needed to configure an empty ArcMap document including adding the PISCES toolbox, selection toolbar and HUC12s feature layer. If you would like to skip this process, Editing.mxd is a preconfigured map document.



PISCES Toolbox

PISCES: building a mxd with tools

Add PISCES toolbox

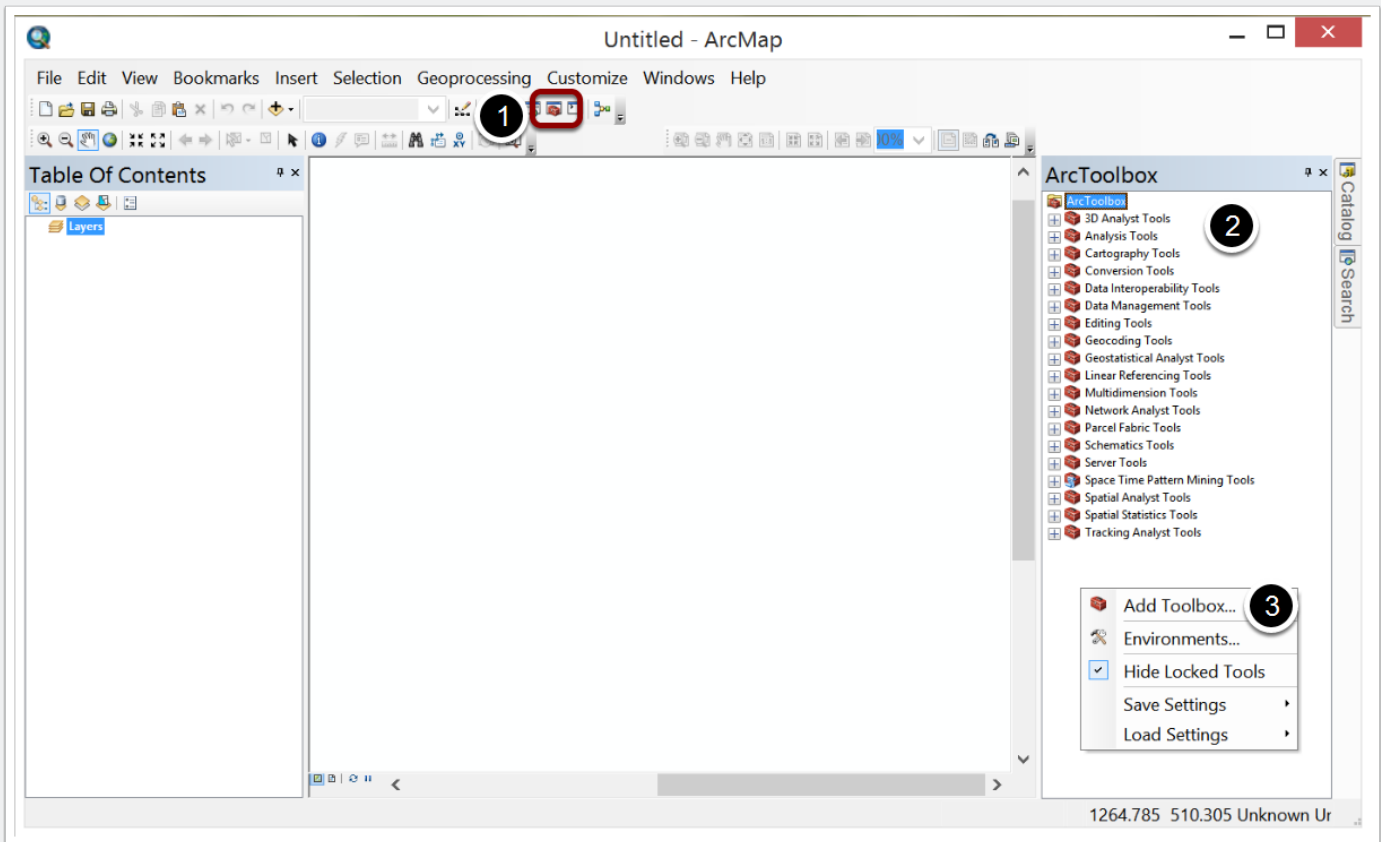
The PISCES toolbox is an ArcGIS toolbox that is a collection of custom ArcGIS Tools. Since it is a custom toolbox, you will need to manually add it to new maps.

The contents of the ArcToolbox window are saved with your document. The next time you open the document, the window will be the same as when you saved the document.

Steps

1. Open the ArcToolbox window pane. Click on shortcut on Standard toolbar or select ArcToolbox in the Geoprocessing menu.
2. Right click inside the window pane (either on ArcToolbox folder or an empty space in the window)
3. Add Toolbox....
4. Navigate to **PISCES\toolbox\PISCES.tbx** (Note: the location of the PISCES base folder is set during installation).

PISCES: building a mxd with tools



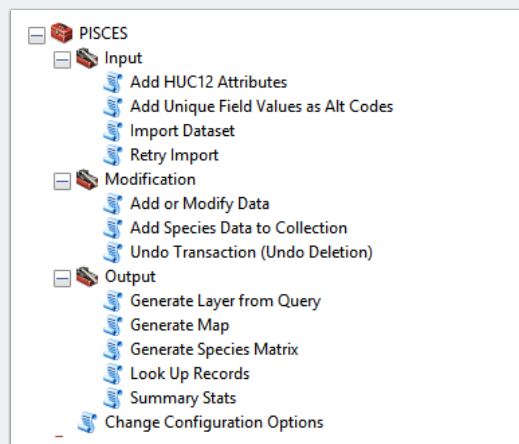
PISCES: building a mxd with tools

The Tools....

The tools in the PISCES toolbox are separated into three different categories:

1. Input
2. Modification
3. Output

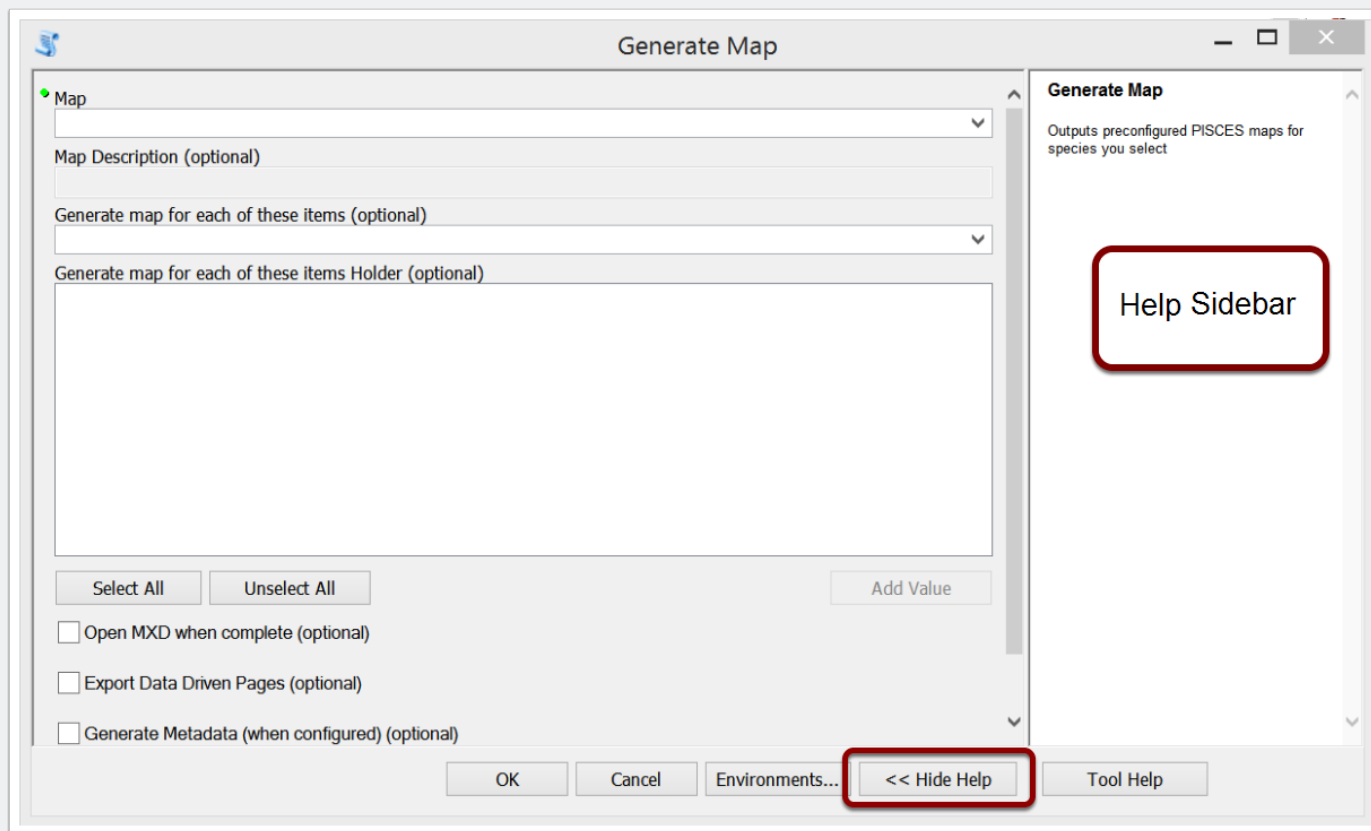
Click on the plus signs (+) to expand each category. Double click on the tool name to open a tool.



PISCES: building a mxd with tools

Tool Help

Each tool has help embedded in the tool's interface. Click the "Show/Hide Help" button to open or close the tool help sidebar. The tool help will provide instructions and helpful tips about how and when to use the tool. For more detailed information, please see the **Tools** section in the full PISCES documentation.



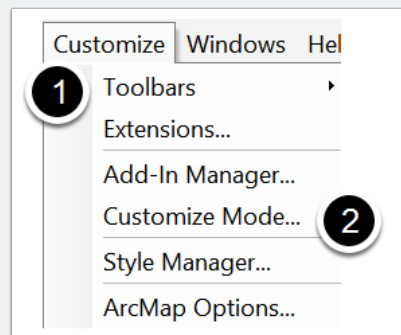
PISCES: building a mxd with tools

Selection toolbar (optional)

It is often helpful to add a toolbar with shortcuts for the most used tools to a map document. This toolbar is not required but can be quite handy if you are toggling between selections methods.

Customize Mode...

1. Open the Customize menu
2. Select Customize Mode..

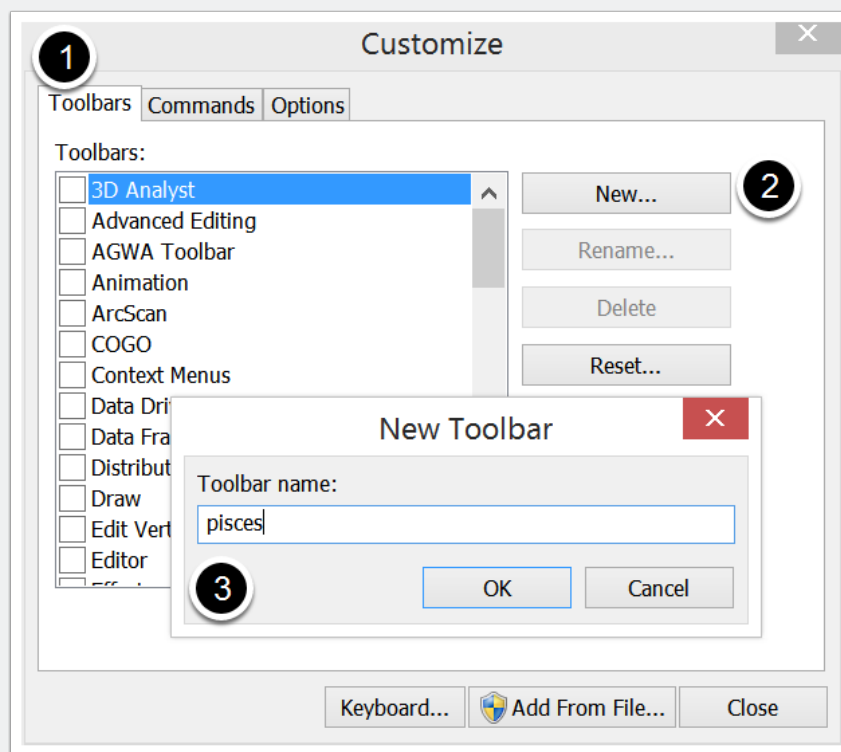


PISCES: building a mxd with tools

Create new toolbar

1. Select the Toolbars tab
2. Click New...
3. Create a name for the new toolbar

ArcMap will add an empty toolbar to your map document. Stay in customize mode to add shortcuts to the toolbar.

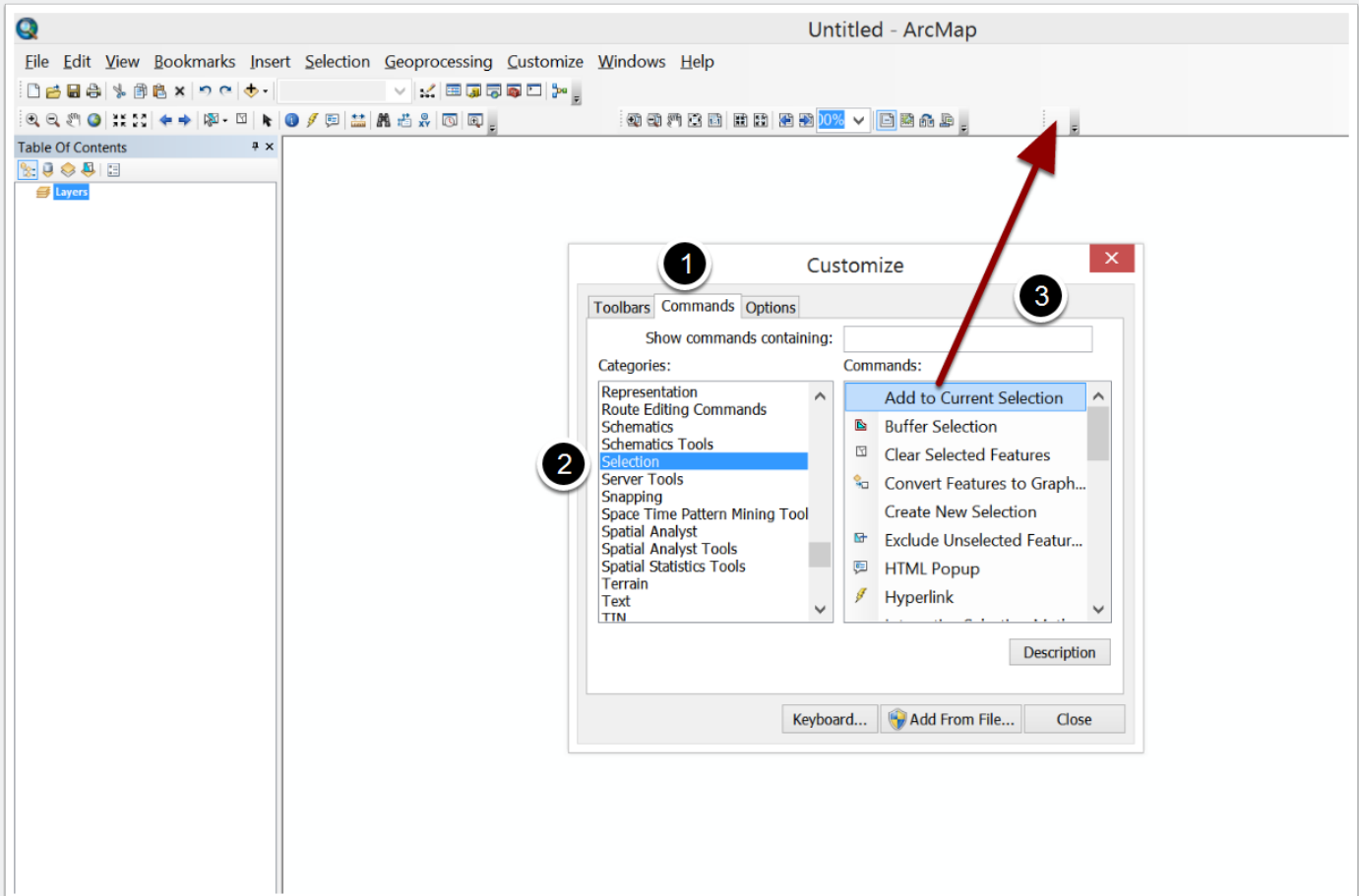


Add Shortcuts

1. Select Commands tab
2. Navigate to Selection Category
3. Drag Commands to new toolbar
 - Add to Current Selection

PISCES: building a mxd with tools

- Remove from Current Selection
- Select by Rectangle
- Clear Selection
- Set Selectable Layers



Optional: Adding shortcuts to PISCES tools in toolbox

Shortcuts to the PISCES toolbox can also be added to the new toolbar. Follow the same steps as above but use the Add Tools.. button to add the pisces tools to the [Geoprocessing Tools] category.

PISCES: building a mxd with tools

Optional: Keyboard hotkeys

Keyboard shortcuts can also be set using the customize mode to create hotkeys for the commonly used tools. Set and modify keyboard shortcuts in Customize --> Customize Mode --> Commands --> Keyboard

Add HUC12 Zones

PISCES tools need a layer in the map document that contains HUC12s. HUC12s are hydrologic unit codes that represent a surface drainage basin or a distinct hydrologic feature (often referred to as watersheds). Hydrologic units have unique identification codes for each watershed in the United States. The software uses the United States Geological Survey Hydrologic Unit Code 12 - subwatersheds boundaries (HUC12s) as the common unit in the database.

Several of the tools in the PISCES toolbox operate on selections of a HUC12 layer, so please add the HUC12 feature layer to your blank map document: PISCES\data\pisces.mdb\HUCs\HUC12FullState

PISCES Data Editing.mxd

Editing.mxd is a preconfigured basemap that already has the PISCES toolbox and selection toolbar. The layers include HUC boundaries, rivers and water bodies, political boundaries, and a custom hillshade basemap. The symbology has been set up to adjust to the visible scale range - more detail is visible at the HUC12 scale than the state scale.

The editing.mxd map document is set up for editing and verifying species ranges.

PISCES: building a mxd with tools

Location: PISCES\mxds\base\editing.mxd

